

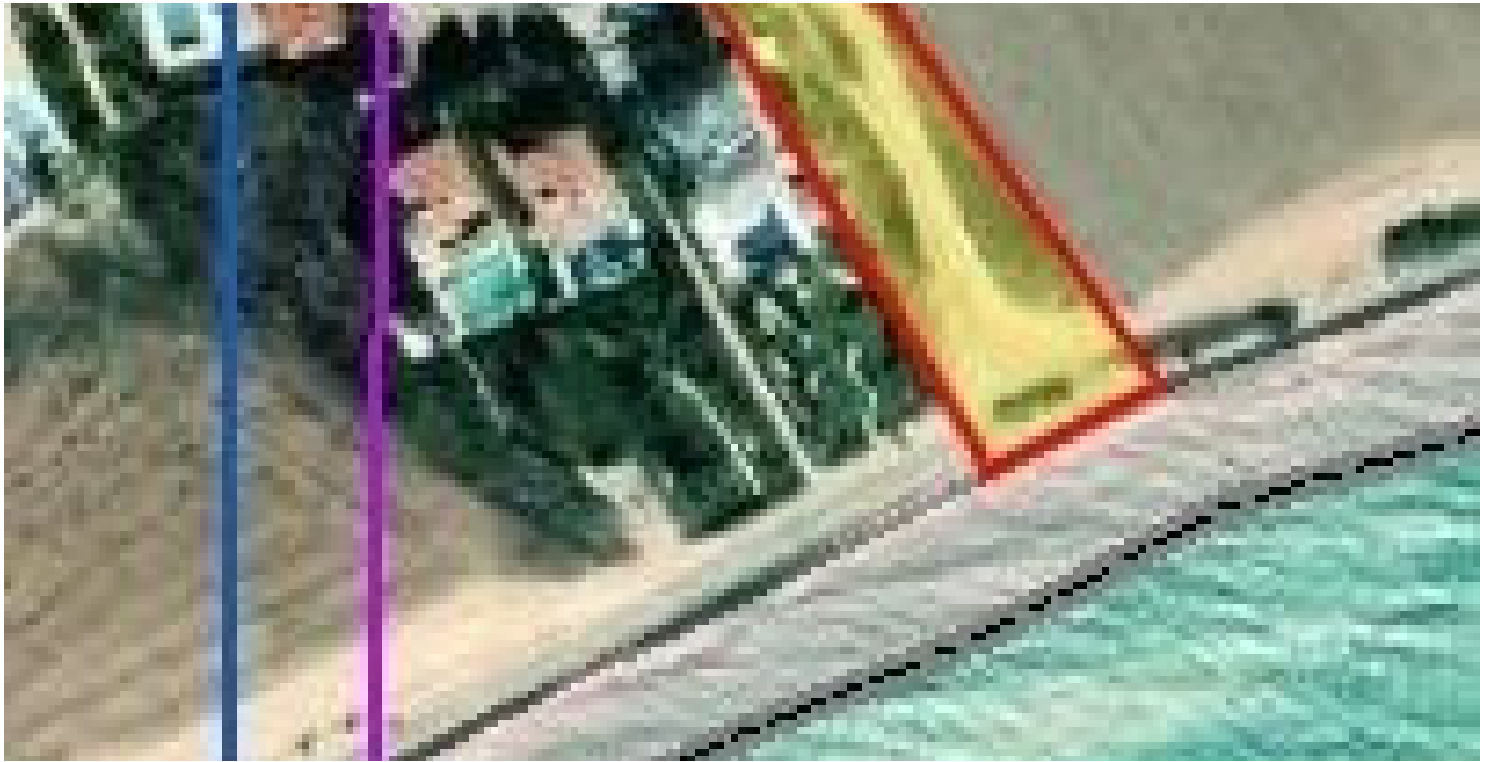
#1171

BeachFront Touristic Field

📍 Mazotos, Larnaca

€1,100,000





Overview

Specifications

Area

 1907 m²

Type

Development Land

Title deed

Yes

Description

The BeachFront tourist field belongs to the tourist zone T2α in the village of Mazotos. Is found in the province of Larnaca and it is found at a distance of 20 kilometers southwesterly of the city of Larnaca. Is a coastal-marine area. This Land is ideal for building one to two houses and your customers will have access to the sea in front of their property

Mazotos has begun in recent years to develop tourism and building with the construction of cottages, especially from Nicosia. The community is home to a number of foreign, mainly English, pensioners who have discovered the beauties of the community and have decided to live permanently in it.

In Mazotos there is the "Camel Park", which hosts friendly camels where the visitor can take a ride with them and rest in the park's cafe.



Additional information

Features

Easy access to highway

Easy access to main roads

Sea front

Sea view

Walking distance to beach

Distances

Amenities



1 km

Airport



15 km

Sea



10 m

Schools



8 km

Resort

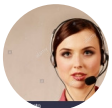


4 km

Planning zones

Zone	Cover factor	Build factor	Max height	Max floors	Affected percentage
T2a	20%	45%	13.1 m	3	-

Contact us



Georgia Efstathiou

☎ (+357) 24100102

✉ info@efstathioubrokers.cy

